

NASA Glenn Research Center Overview

Presented at:
The ACAST Workshop

August 16, 2005

Arun K. Sehra
Director of Programs and Projects



Glenn Research Center's Two Ohio Campuses



Cleveland (Brook Park and Fairview Park)

- 350 acres
- 1900 civil servants and
- > 1500 contractors

Plum Brook (Sandusky)

- 6400 acres
- 15 civil servants and 75 contractors



GRC Civil Service Workforce

- 74% of workforce dedicated to technical mission
- 61% of S&E's have advanced degrees, 25% with earned PhD's
- Average age of technical workforce is 46.3 years
- The over-60 S&E population outnumbers the under-30 S&E workforce by ~5:1



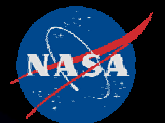
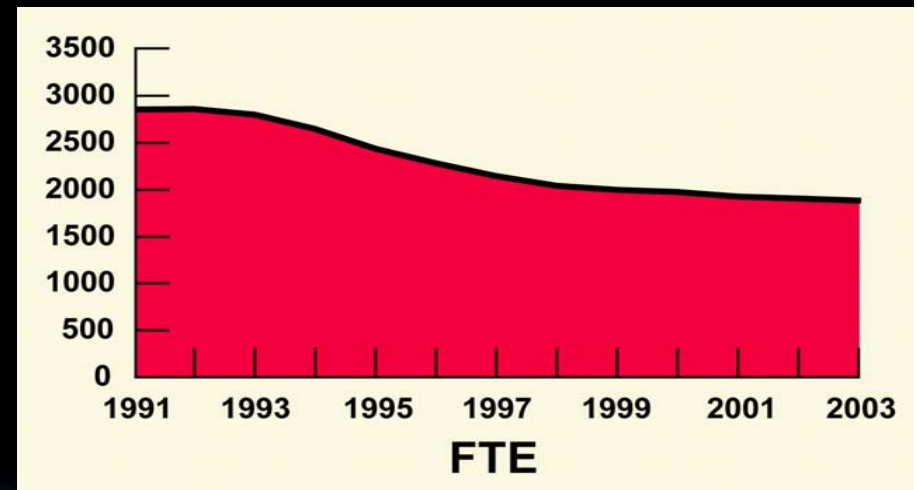
Administrative
and Clerical



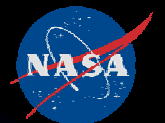
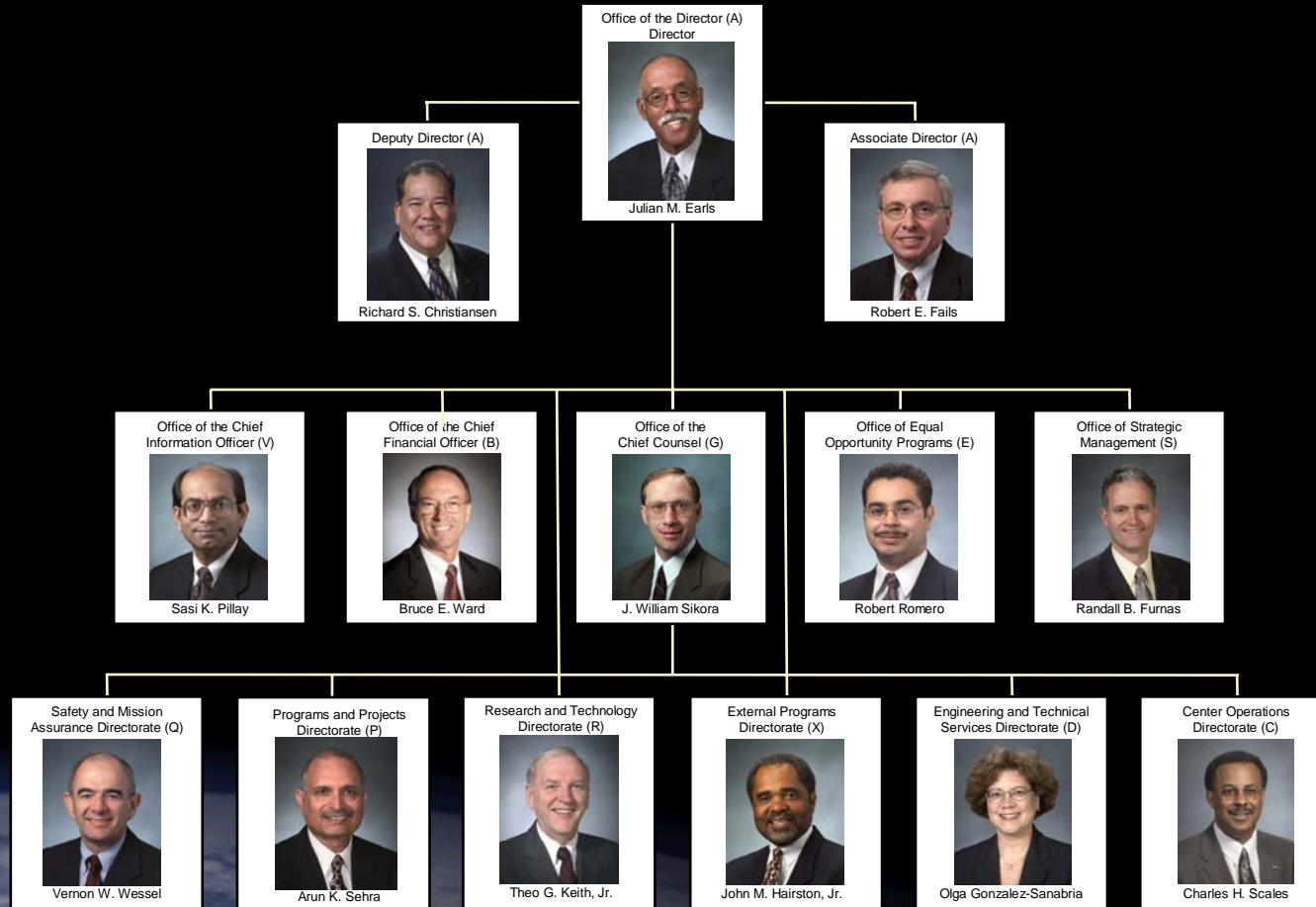
Scientists and
Engineers



Skilled
Craftsman



NASA Glenn Research Center Leadership Team



Glenn's Core Competencies Enable the Future



Power and Energy Conversion Systems

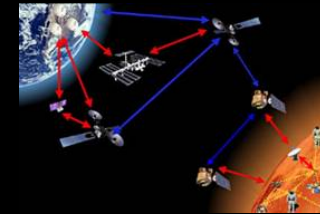
Nuclear Systems

Fluids, Combustion and Reacting Systems Including Gravity Dependence

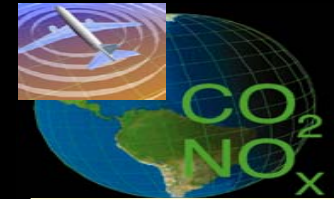


Interdisciplinary Bioengineering for Human Systems

In-Space Propulsion Systems



Aerospace Communications Architectures and Subsystems

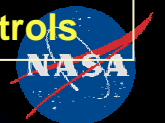


Aeropropulsion Systems



Test and Evaluation for Atmospheric, Space and Gravitational Environments

Supporting Competencies: Systems Analysis, Materials/ Structures, and Instrumentation/ Controls



GRC Space Facilities

Spacecraft Propulsion Research Facility



Telescience Suppt. Ctr.



Research Labs



Reduced Gravity Aircraft



2 and 5 sec Drop Towers



8x6 Supersonic Wind Tunnel



Materials and Structures Complex



Cryogenic Propellant Tank Facility



SMIRF Cryogenic Research Facility



10x10 Supersonic Wind Tunnel



Hypersonic Tunnel Facility



Engine Research Building



Research Combustion Lab



Engine Components Research Lab



Instrumentation and Control Lab



Space Power Facility



Power Systems Facility



Plum Brook Station

Sandusky, Ohio

NASA Glenn Research Center

Backup Chart



CRYOGENIC PROPELLANT TANK FACILITY



HYPERSONIC TUNNEL FACILITY



SPACECRAFT PROPULSION TEST FACILITY



SPACE POWER FACILITY



PROGRAMS & PROJECTS DIRECTORATE LEADERSHIP TEAM

